

## Overview

Software version 4.2.16.1 adds multiple features and performance upgrades to our world-class SDP-75 audio-video preamplifier. A primary feature is the addition of Parametric Equalization (PEQ) in the channel output signal.

This update is available to owners at no cost.

## New Features

### Alternate Parametric Equalization (PEQ)

- Allows manual PEQ filters per output channel as an option to replace AEQ per output channel
- PEQs typically are applied to Sub channels as part of integrating Sound Field Management 2.0 (SFM2)
- Anechoic Equalization (AEQ) parameters are not visible nor editable. AEQ loudspeaker profiles include:

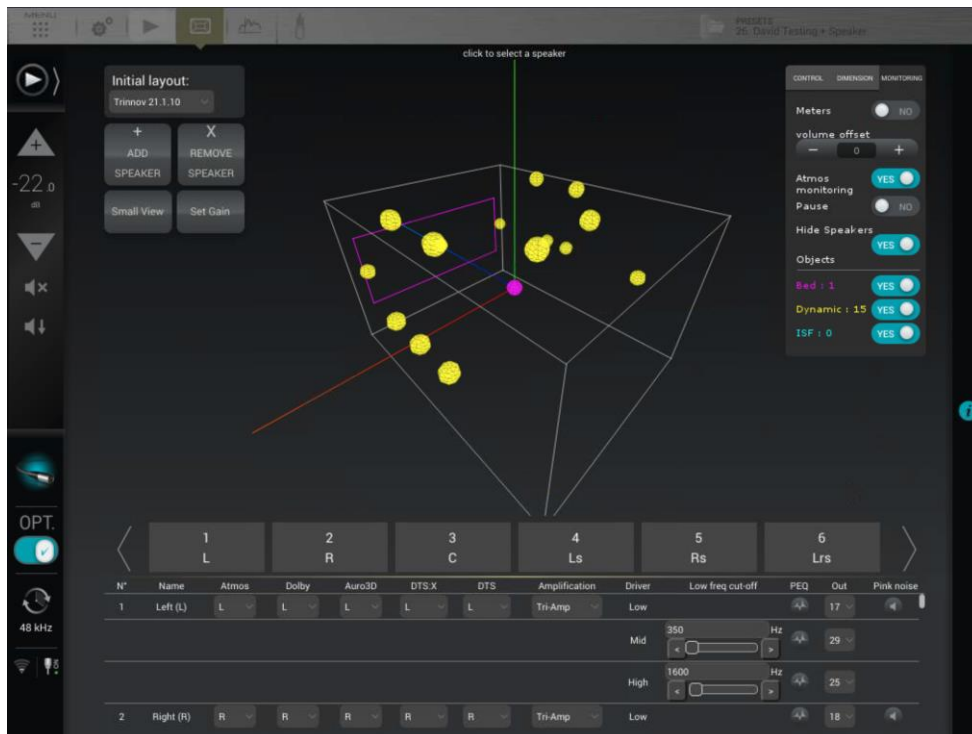
**JBL Synthesis:** SCL-2, SCL-3, SCL-4

**Premium JBL:** Everest DD67000, 4367

**JBL Pro:** M2, LSR708i, LSR705i

### Dolby Atmos Object Viewer

- Provides the ability to display Atmos object locations in real-time during playback of a source.
- Object positions are displayed in the SDP-75 3D room representation.



- A number of display options are available:
  - Display Atmos objects

8500 Balboa Boulevard, Northridge, CA  
 91329

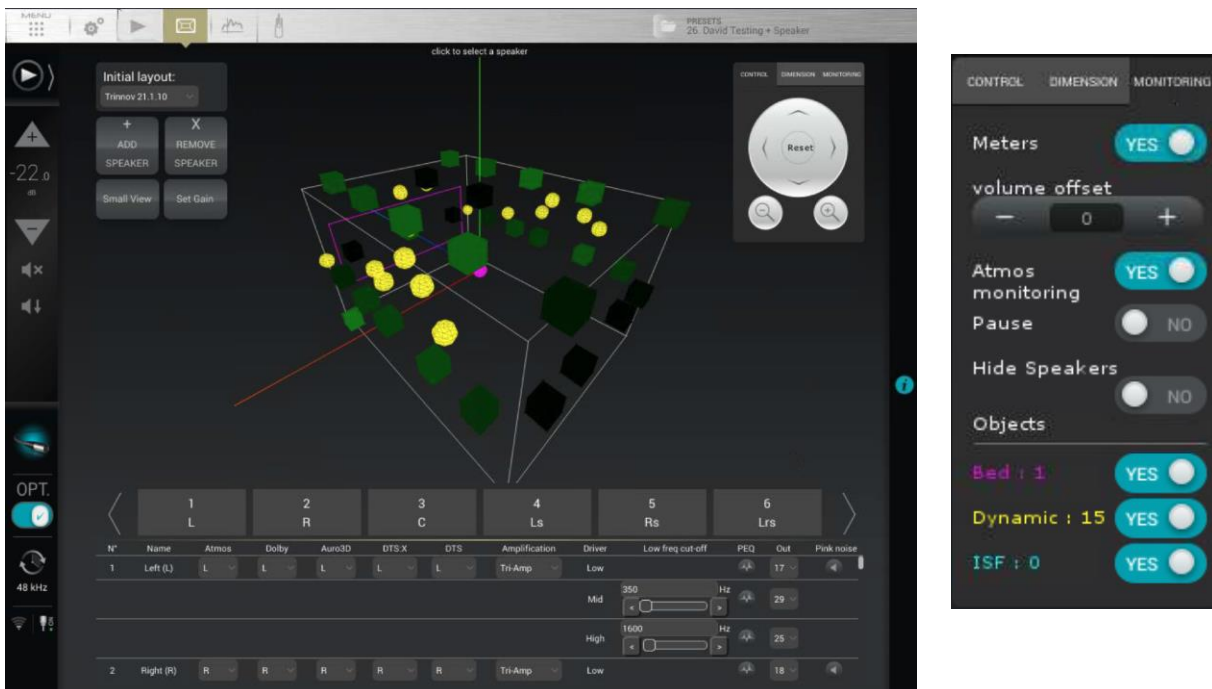
## SDP-75 SOFTWARE RELEASE V4.2.16

### WITH PEQ IMPLEMENTED

OCTOBER 8, 2020

- Show / Hide Speakers
  - Select which objects to display
  - Display volume (see next section)
- Important notes:
    - We are using the metadata in the Atmos stream to give an indication of what the objects are doing. It is not perfect but it is intended as a visual aid to improve your understanding of the complexity of the soundtrack.
    - The information presented may not be accurate with objects encoded in ISF (Intermediate Spatial Format) mostly used in video games.
    - This feature may not be working reliably with Xbox One.

### Output per speaker in the 3D view (Volume Monitoring)



- In addition to object positions, we have added volume monitoring in the 3D view
- The volume of each speaker is represented in the speaker itself.
- A black speaker is silent and it will turn dark green to bright green and red when clipping.(what is yellow?)
- By default, the actual output volume is displayed, and is affected by your listening level. As a result a display volume offset option is added so the relative volumes of each speaker can be monitored when listening at low volume.

OCTOBER 8, 2020

### Impulse Generator

In the Processor / Input page, a “Pulse” button has been added that allows you to generate a pink pulse that hits -10dB FS.

This test signal is typically used by an advanced calibrator to perform custom time-alignment. If used, caution is advised to set proper level before playing input sources.

## Enhancements

---

### AEQ and PEQ enhancements

- A speaker with AEQ or PEQ parameters applied is now highlighted in blue

### ISO Frequencies used for the Graphic EQ faders

- Changed the frequency scale on the Graphic EQ faders
- Complies again with ISO and still allows editing EQ down to 10Hz

### Logging system

- Improved system logging when units are not powered off regularly
- Large log files are automatically downsized to prevent system instability

## Bug fixes

---

### Various bug fixes with DTS:X

### Fixed bad behavior with Active Crossovers filters set to none

- The frequency indicated was still used for some calculations, leading to inaccurate level alignment.

### Clipping signal in PCM

- Fixed an issue when using balanced analog inputs with some devices

### User EQs were not saved properly

- The User EQ was not always reloaded properly after preset selection

## Software Info

---

### Identifying Software

The current software version is identified at the front panel of the unit.

With the unit powered on, press the **Menu** button and use the Input knob to scroll to “About”. Push the **Select** button to view the device info.

8500 Balboa Boulevard, Northridge, CA  
91329

## SDP-75 SOFTWARE RELEASE V4.2.16 WITH PEQ IMPLEMENTED

OCTOBER 8, 2020

Page 4 of 4

### Remote Software Upgrades

---

**Important:** JBL Synthesis Technical Support will provide the software upgrade remotely with a local technician on site to monitor the progress and ensure no interruptions in the upgrade procedure. Before proceeding with a software update, the unit should be backed up with a USB Stick to ensure that the presets, calibration and sources configuration is saved. JBL Synthesis (and/or Trinnov) is not responsible for any lost data that may be a byproduct of the software updating process.

Please submit the serial number of your SDP-75 and a software update request to JBL Synthesis technical support at [csupport@harman.com](mailto:csupport@harman.com)

Technical support can also be contacted over the phone Mon-Fri 9am-5pm EST at 1-888-691-4171

Subsequently, you will be sent an e-mail from technical support confirming the time frame in which the update will be pushed to the unit.

The SDP-75 must be powered on and connected to a network with internet access before the update process can be initiated. The update process is activated remotely from the factory. Any USB stick must be removed before beginning the update. Do not power cycle, or attempt to control or interrupt the update process during this time. Technical support may refuse to proceed to update unless a backup has been completed.

The update process verification on the front panel of the SDP-75:



Once the update is complete, you will see "Update Finished" displayed on the front panel of the SDP-75.

Power cycle the SDP-75.

If the Software Version now shows "Version: 4.2.16.1", the update was successful.